

INSTALLATION INSTRUCTIONS

DESCRIPTION: Engine Guard Set
PART NUMBER: BW3-F43B0-V0
MODEL: '21+ Ténéré 700



⚠ WARNING

Please read and understand these instructions completely before installation to avoid possible injury, or damage to the accessory or vehicle.

WARRANTY INFORMATION:

In the United States, see your Yamaha dealer for a copy of the Yamaha Genuine Parts and Accessories Limited Warranty.

NOTICE:

Installation of this kit requires a torque wrench and should be performed by an authorized Yamaha dealer or a qualified mechanic.

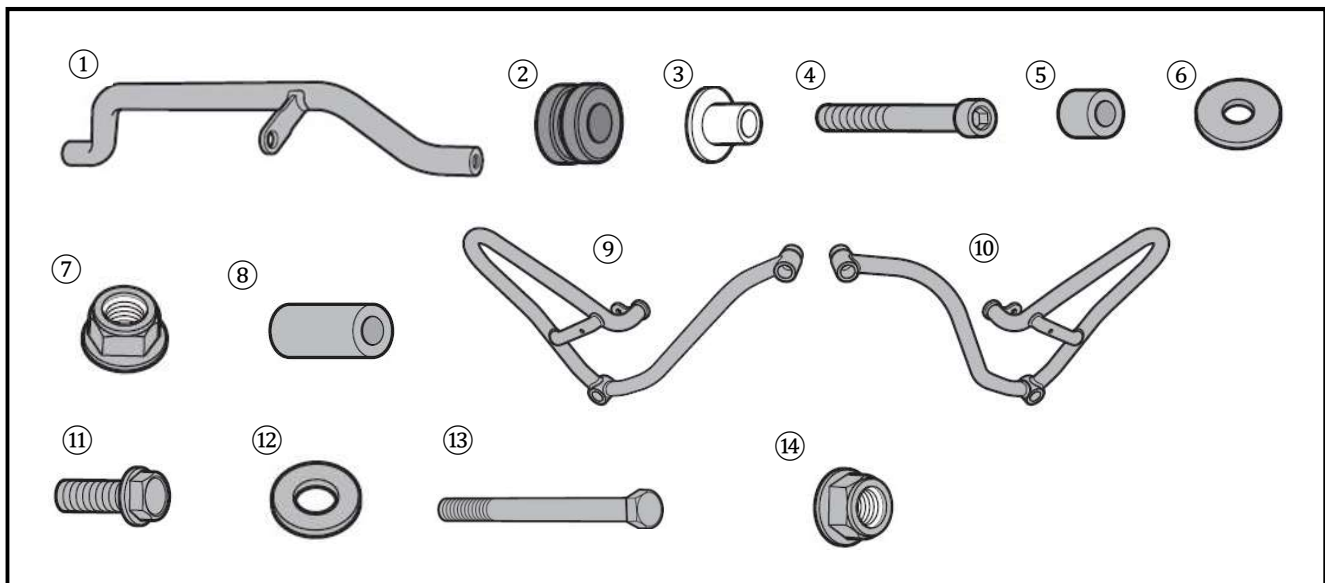
DEALER OR INSTALLER:

These instructions contain important information for future reference and *must* be given to the customer.

PARTS LIST:

No.	Part Number	Description	Qty
--	BW3-F43B0-V0	Engine Guard Set	-
①	-	Lower Tube Brace	1
②	-	Grommet	1
③	-	Grommet sleeve	1
④	-	M6X40mm Socket Head Bolt	1
⑤	-	Bushing 11.5mm	1
⑥	-	Washer 1.5mm	2
⑦	-	M6 Nylon Locking Nut	1
⑧	-	Bushing 56mm	1
⑨	-	Left Guard	1
⑩	-	Right Guard	1
⑪	-	M8x22mm Hex Flanged Bolt	2
⑫	-	M10 Washer	1
⑬	-	M10x130mm Hex Bolt	1
⑭	-	M10 Flanged Nylon Locking Nut	1

* Part supplied with kit only and not available separately.



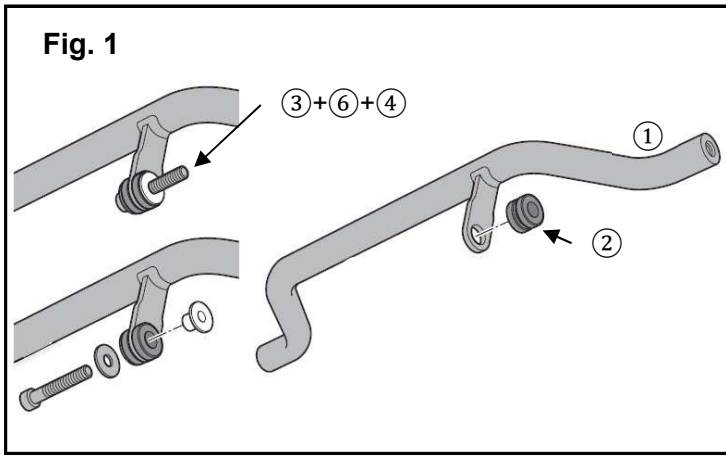


Fig. 1

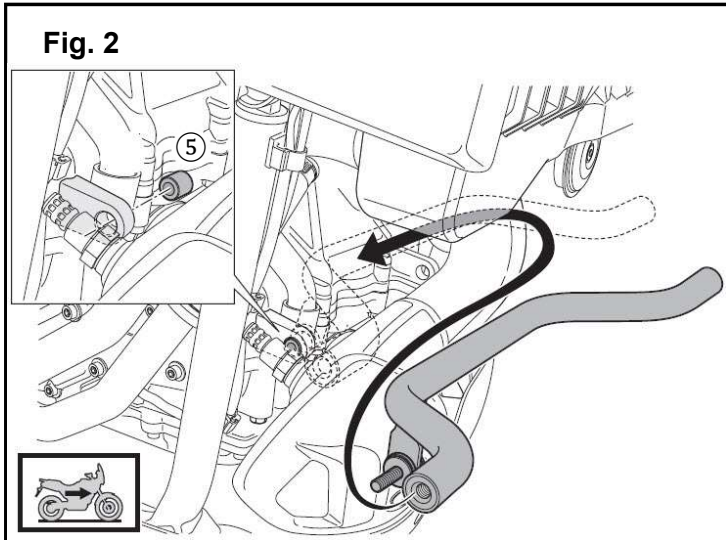


Fig. 2

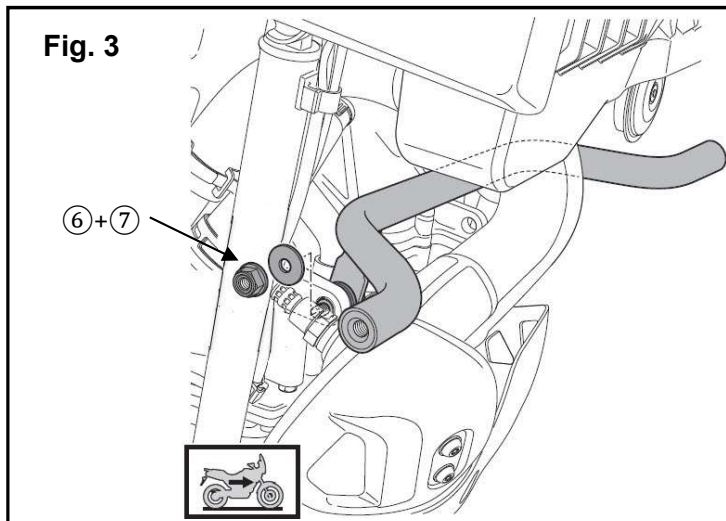


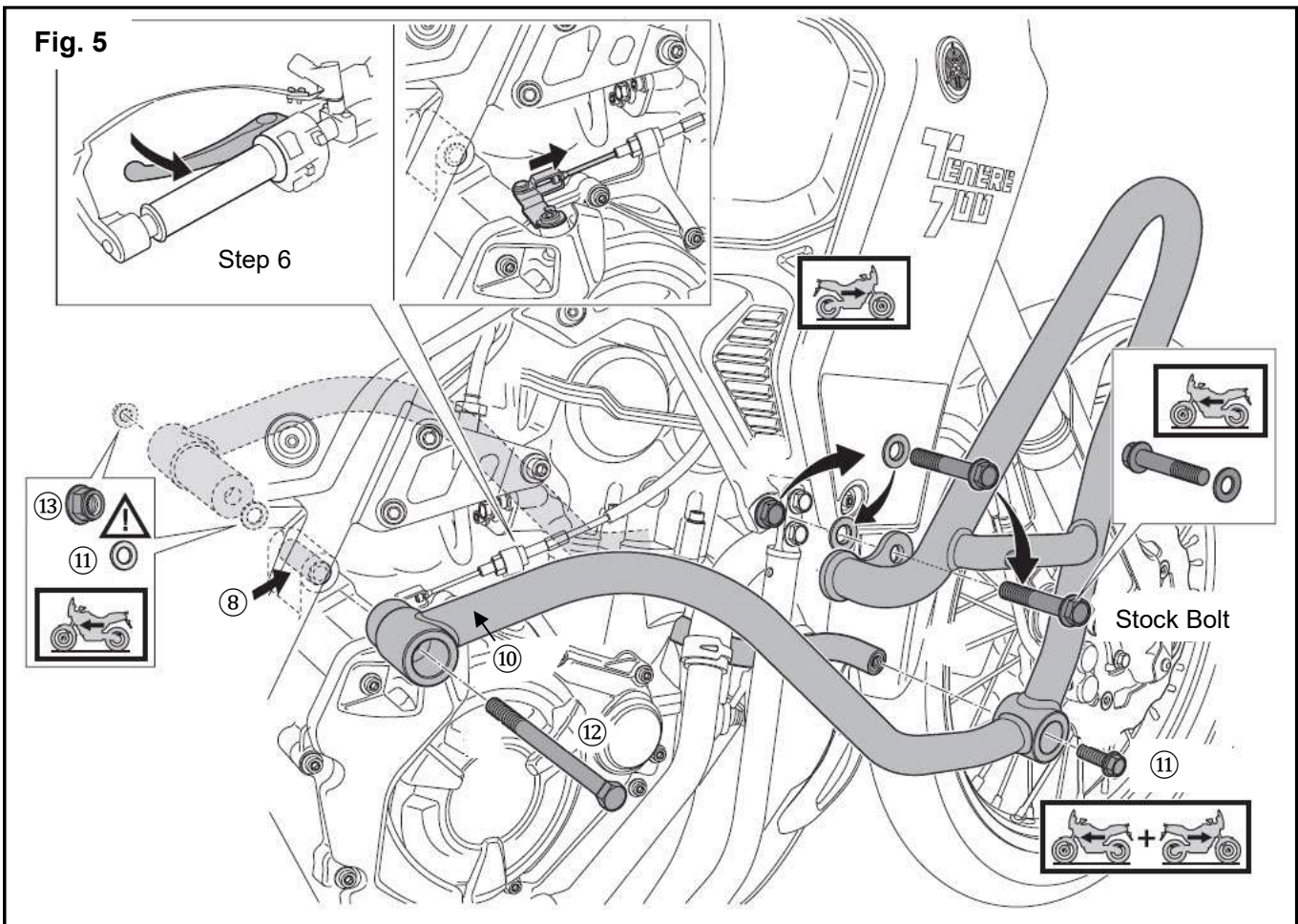
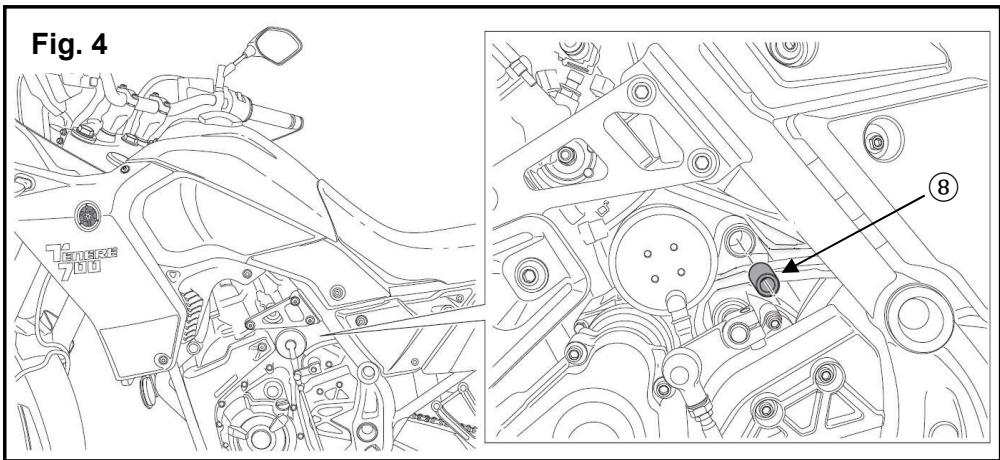
Fig. 3

PREPARATION:

- Place the vehicle on a secure and level surface.
- Clean the mounting surfaces before beginning installation.

INSTALLATION:

1. Insert (2) Grommet into the (1) Lower Tube Brace. (Fig. 1)
2. Insert (3) Grommet Sleeve into the (2) Grommet and insert the (4) M6x40mm Socket Head Bolt with (6) Washer into the (3) Grommet Sleeve. (Fig. 1)
3. Locate the frame tab behind the oxygen sensor and insert the (5) Bushing 11.5mm. Maneuver the (1) Lower Tube Brace behind the exhaust system and insert the (4) M6x40mm Socket Head Bolt into the (5) Bushing 11.5mm. (Fig. 2)
4. Thread the (6) Washer and the (7) M6 Nylon Locking Nut onto the (4) M6x40mm Socket Head Bolt and tighten to 10 Nm (1.0 kg-m or 7.3 lb-ft). (Fig. 3)
5. Insert the (8) Bushing 56mm into the frame tab behind the starter. (Fig.4)
6. Working on the right side of the motorcycle, remove the stock frame bolt and washer just behind the lower corner of the front fairing. This will be reused. (Fig. 5)
Align (10) Right Guard over the mounting hole of the bolt removed in Step: 6, the (1) Lower Tube Brace and the frame tab that has the (8) Bushing 56mm. (Fig. 5)
Note: The clutch lever will need to be pulled to allow the (10) Right Guard to slip past the clutch linkage. (Fig. 5)
7. Thread the stock frame bolt through the (10) Right Guard, stock washer and into the frame mounting location. Tighten to 75Nm (7.6 kg-m or 55 lb-ft). (Fig. 5)
8. Thread the (11) M8x22mm Hex Flanged Bolt through the (10) Right Guard and into the (1) Lower Tube Brace. Tighten to 20Nm (2.0 kg-m or 14.7 lb-ft)
9. Insert the (13) M10x130mm Hex Bolt through the rear mounting hole in the (10) Right Guard and into the frame tab where the (8) Bushing 56mm was inserted. (Fig. 5)
10. Place the (12) 10M Washer over the threaded end of the (13) M10x130mm Bolt on the left side of the motorcycle.
11. Repeat Steps 6 through 9 for (9) Left Guard on the left side of the motorcycle. (Fig.5)
12. The rear mounting hole for the (9) Left Guard will insert over the (13) M10x130mm Hex Bolt. Thread the (14) M10 Flanged Nylon Locking Nut on the bolt and tighten to 40Nm (4.0 kg-m or 29.5 lb-ft). (Fig. 5)



MAINTENANCE:

Periodically, check torque on all hardware. If loose hardware is found, re-torque to specification.

CARE AND CLEANING:

Clean painted metal parts with a clean soft cloth and mild soap and water solution. Rinse and dry.

CUSTOMER SERVICE:

For further information see your Yamaha dealer.

ESTIMATED TIME TO INSTALL: 0.5 HRS.